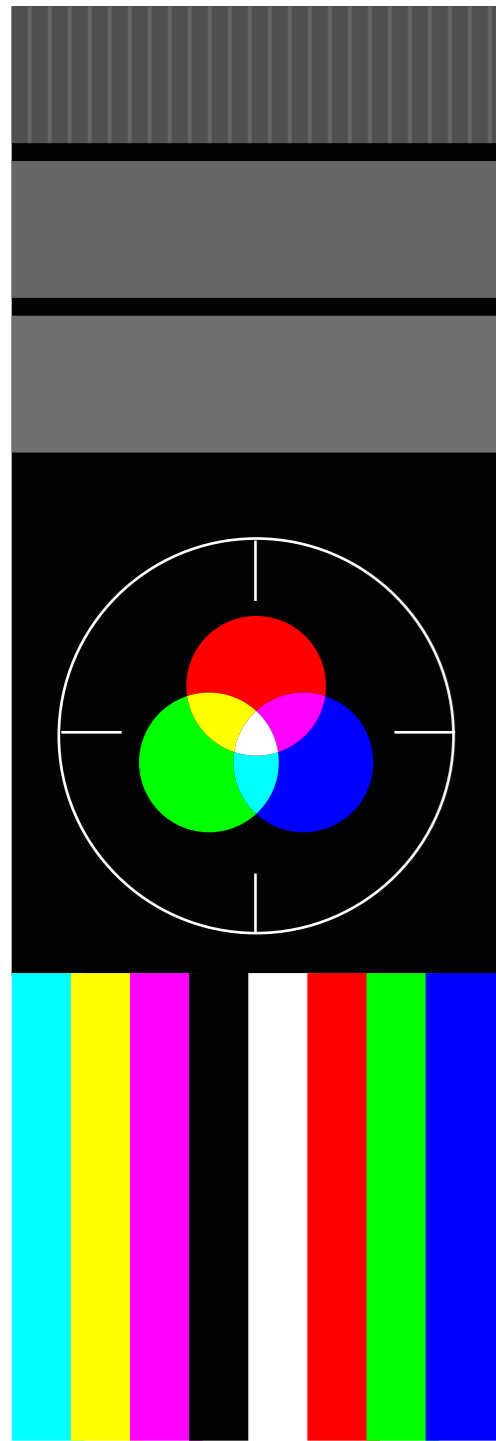


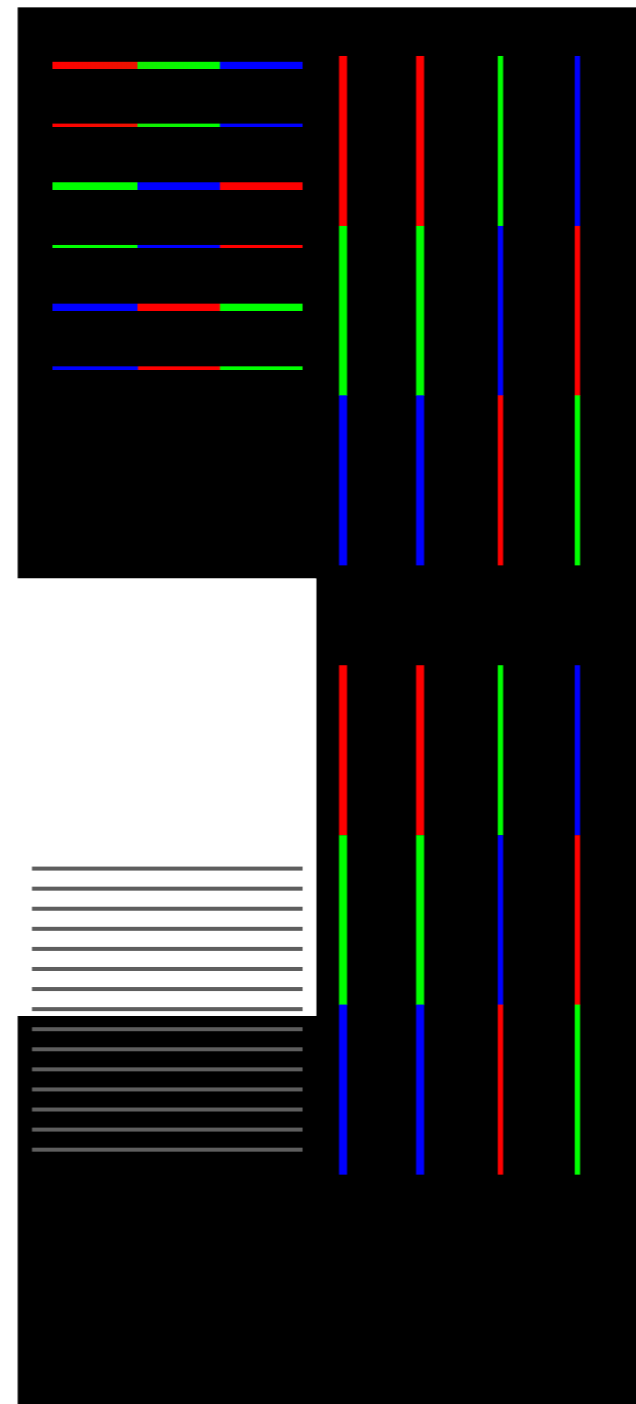
EQ Control



Gain Control



Skew Control



Test Pattern for Setting up Teq AV/IT's Twisted-Pair CAT5 Receivers

1024x768-XGA

For best results, use this test pattern if your displays native resolution is 1024x768 (XGA).

1. Gain Control - Adjust the Gain dial on the receiver until the inner step of the top block is black and the middle step is about half the intensity of the outer step. If the gain is too low, then the middle and outer steps maybe missing or barely seen. If the gain is too high, then in the bottom block, the white steps are barely distinguishable.

2. EQ Control - Adjust the EQ dial on the receiver until the patterns become stable, without significant noise. Reduce any streaking effect or bright shadows visible in the grey box located to the right of the black and white lines.

3. Skew Control - If the receiver has the skew adjustment feature enabled, then adjust the skew settings for each color (Red, Green, and Blue) until the vertical lines are aligned horizontally and white lines in black background are pure white without trace of red, green, or blue.

Skew adjustments are made using the two RGB SKEW ADJUST buttons on the receiver. Press and hold either button to activate. One of the LEDs will flash to indicate the color to be adjusted. Use the two buttons to adjust the given color left or right. Once you are through adjusting the given color, press and hold either button to advance to the next color. Repeat these steps until you receive the desired result. All adjustments are automatically saved by the receiver.

PDF Shortcuts:
Ctrl+L = full screen
Ctrl+1 = 100% zoom
Ctrl+Q = to exit

